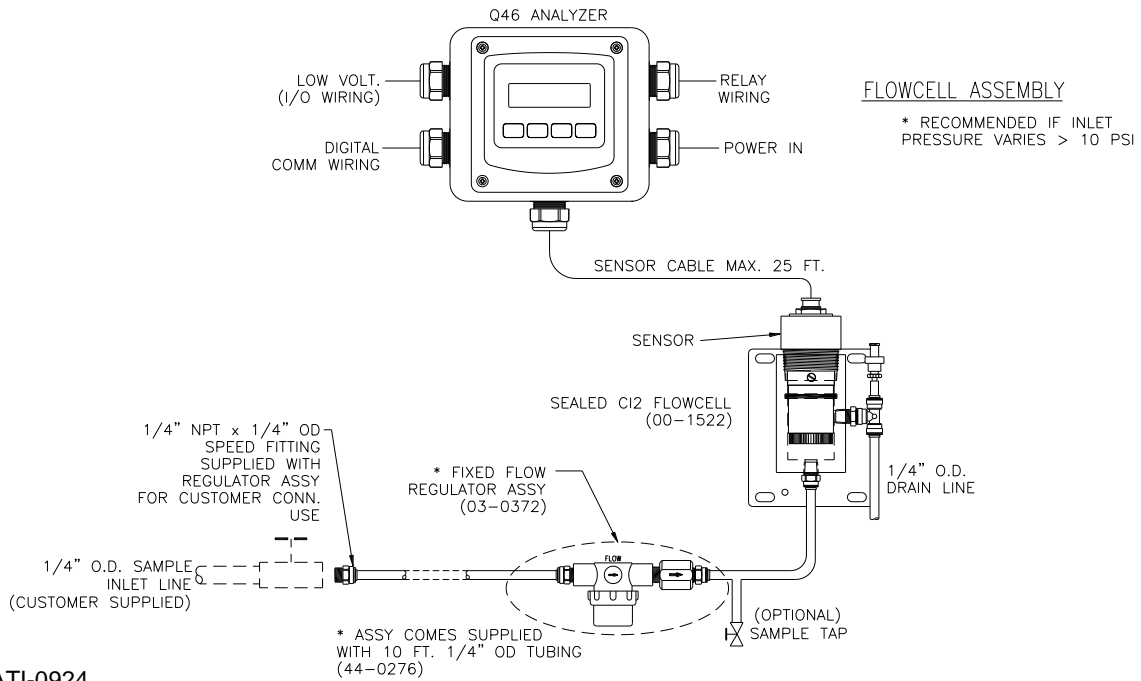


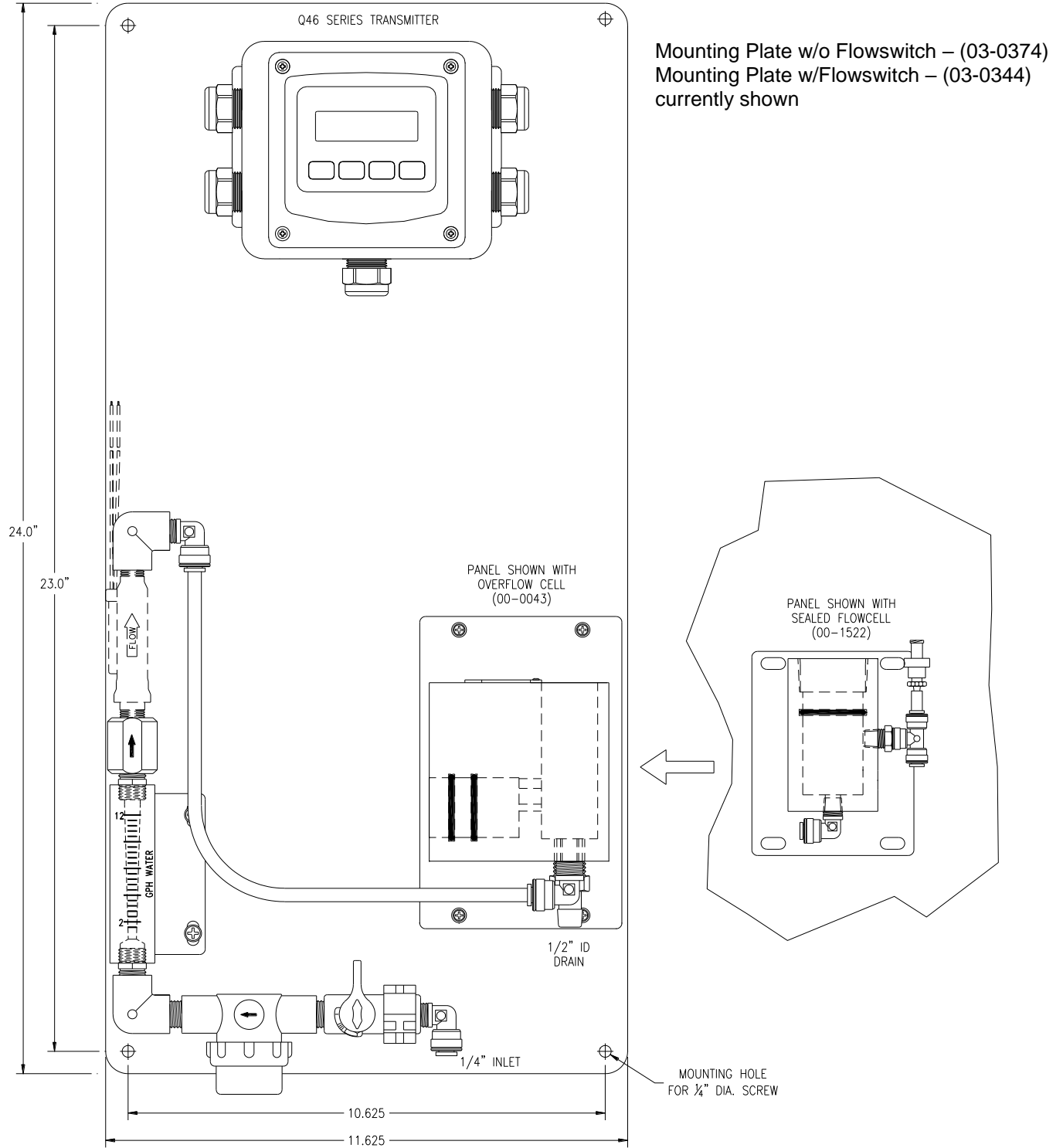


**SYSTEM DIAGRAM w/SEALED FLOWCELL**



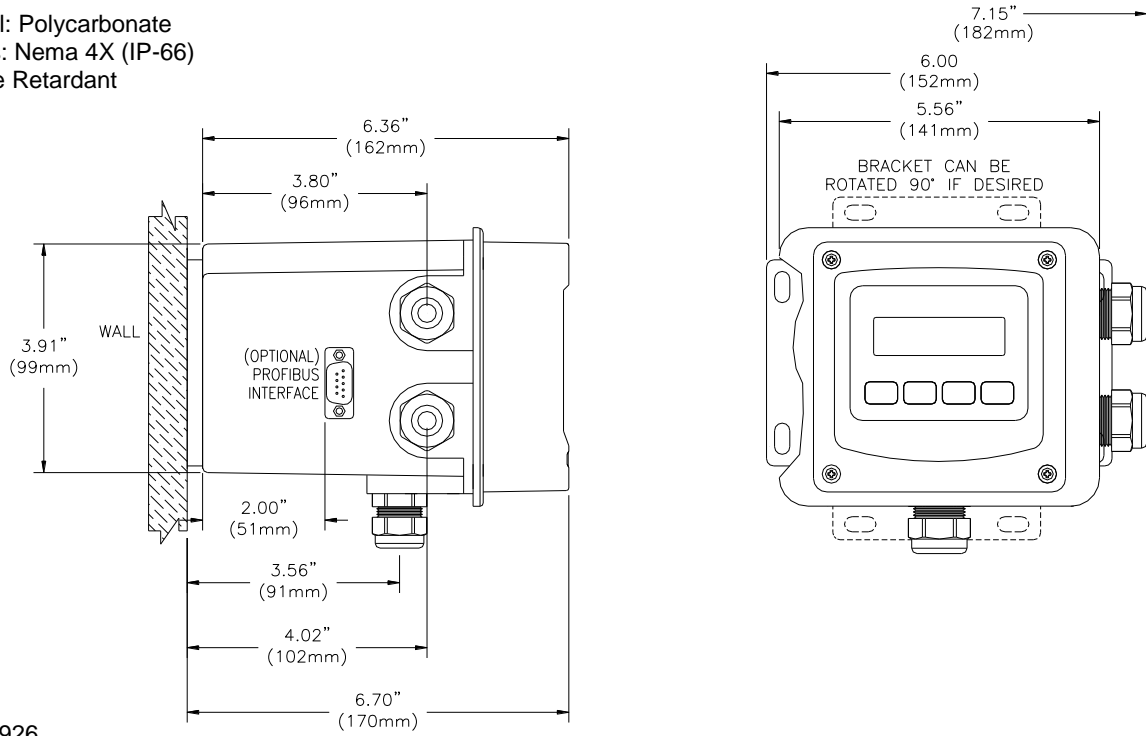
ATI-0924

**SYSTEM MOUNTING PLATE ASSY**



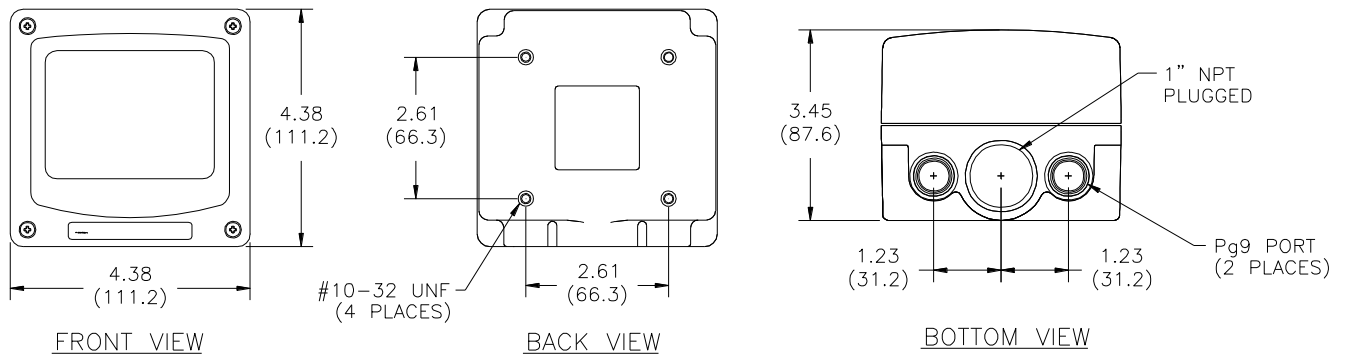
**ANALYZER DIMENSIONS (WALL MOUNT SHOWN)**

Material: Polycarbonate  
 Ratings: Nema 4X (IP-66)  
 V-0 Fire Retardant



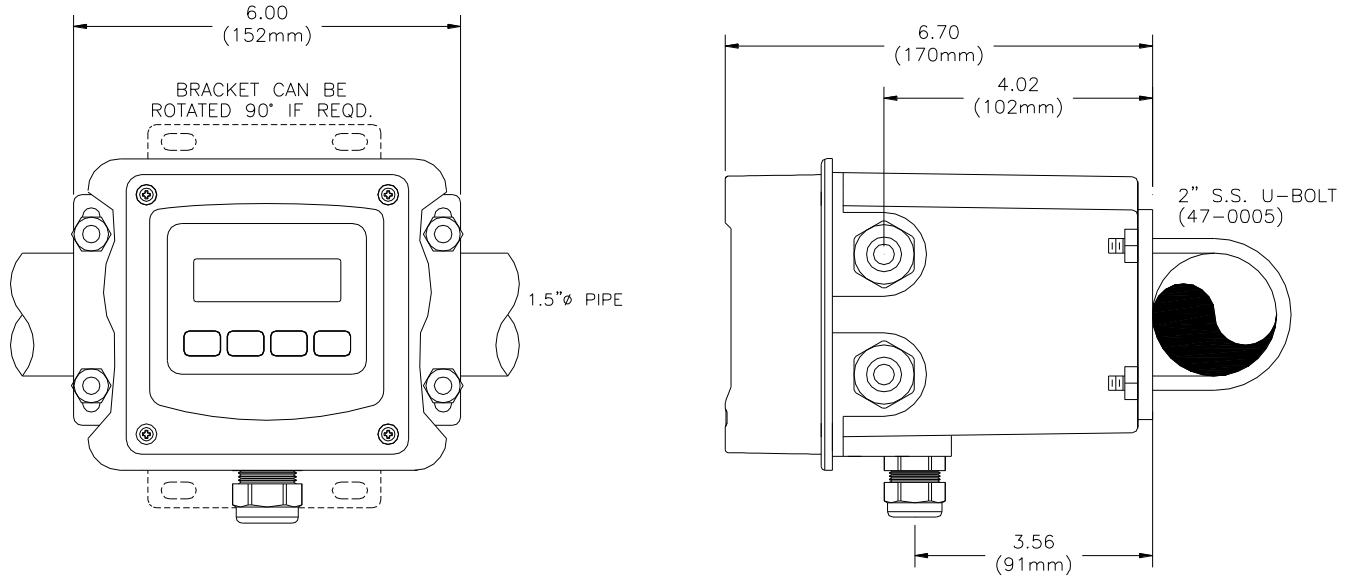
ATI-0926

**JUNCTION BOX**



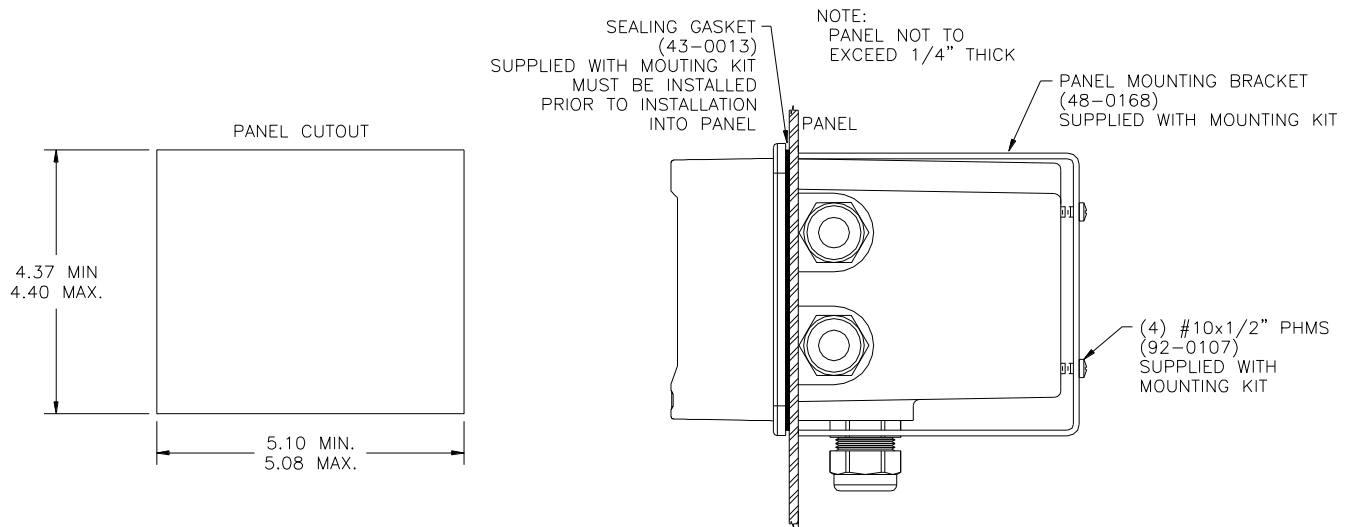
ATI-0655

**PIPE MOUNTING**



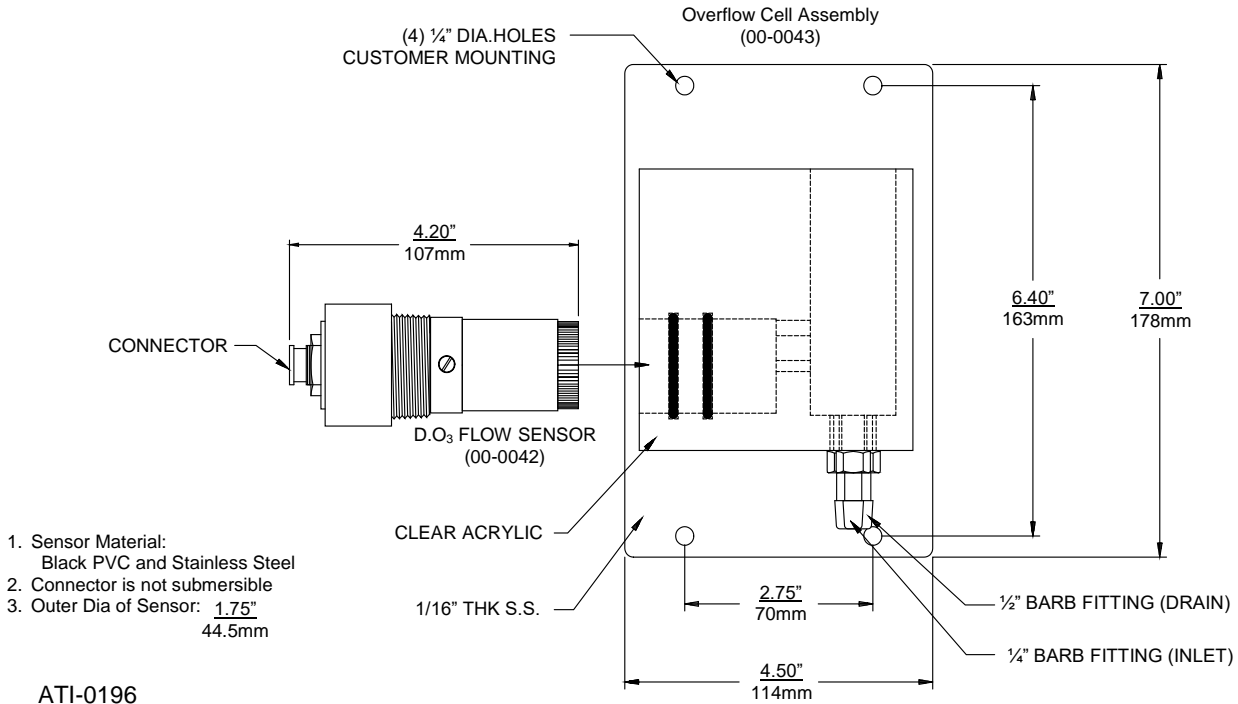
ATI-0927

**PANEL MOUNTING**



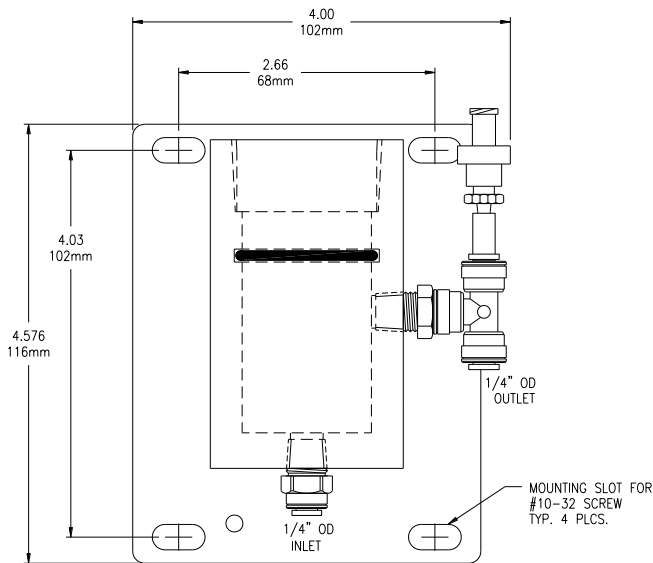
ATI-0928

**FLOW SENSOR DIMENSIONS & OVERFLOW CELL INSTALLATION**



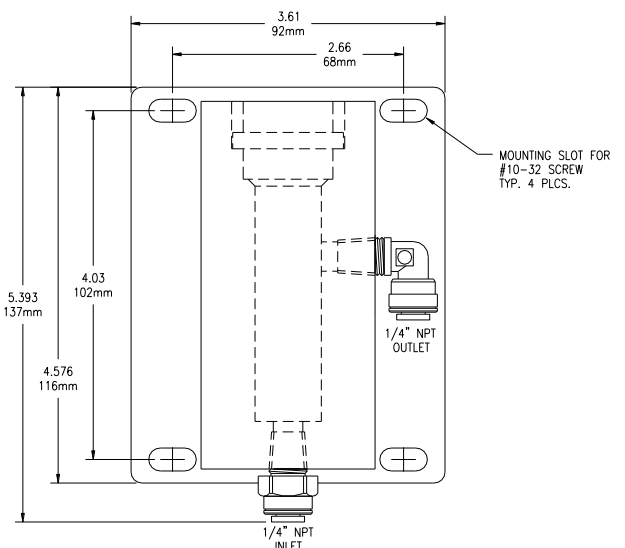
**Cl<sub>2</sub> SEALED FLOWCELL ASSY (00-1522)**

Material: Acrylic  
Mounting Plate: PVC

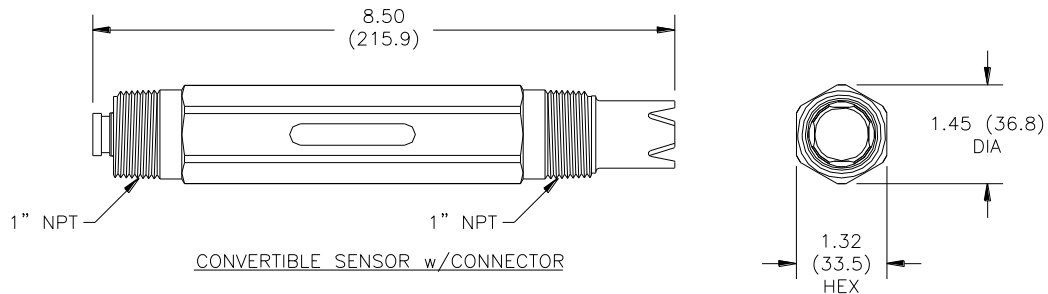


**pH SEALED FLOWCELL ASSY (00-1527)**

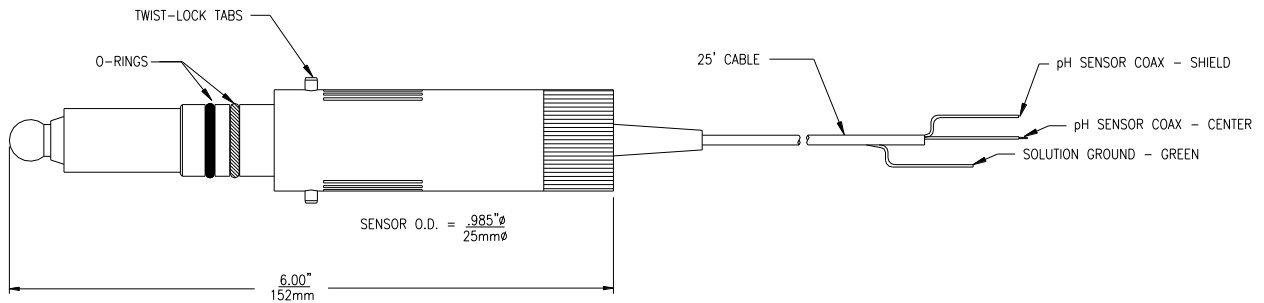
Material: Acrylic  
Mounting Plate: PVC



**(07-0096) pH SENSOR DIMENSIONS**

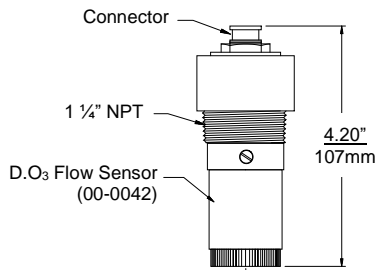


**(63-101) pH SENSOR DIMENSIONS**

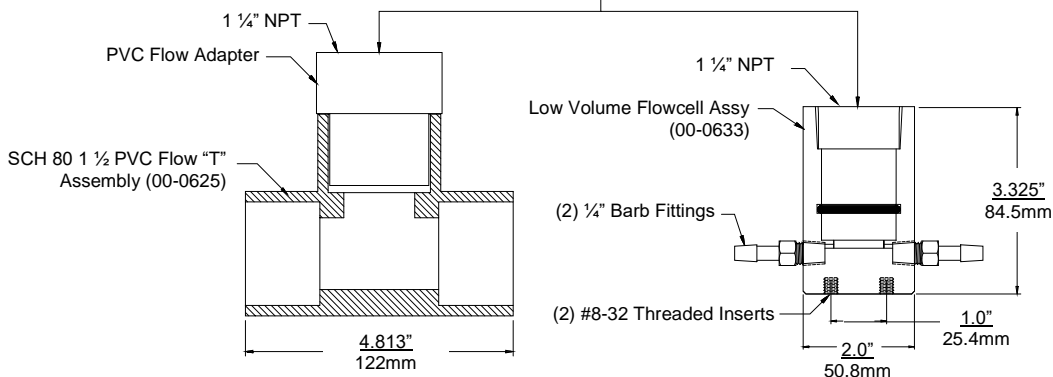


**SPECIAL APPLICATION FLOWCELLS (CONSULT FACTORY)**

- 1. Sensor Material: Black PVC & Stainless Steel
- 2. Connector is not submersible
- 3. Outer Diameter of Sensor: 1.75" Dia. 44.5mm

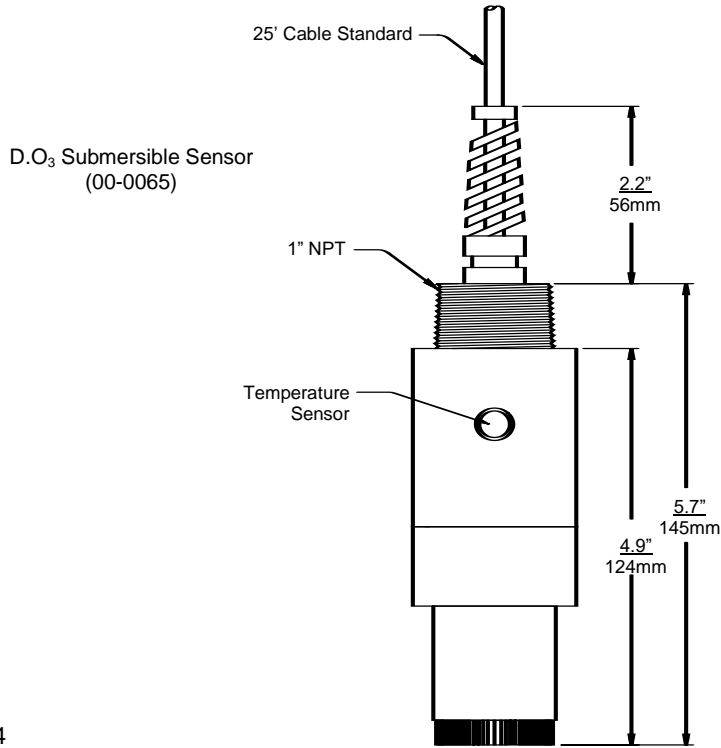


- Flow "T"
- 1. Max 50 PSI for Flow "T" Operation
  - 2. Use Teflon Tape to seal In-Line Sensor
- Low Volume Flowcell
- 1. Mat: Clear Acrylic

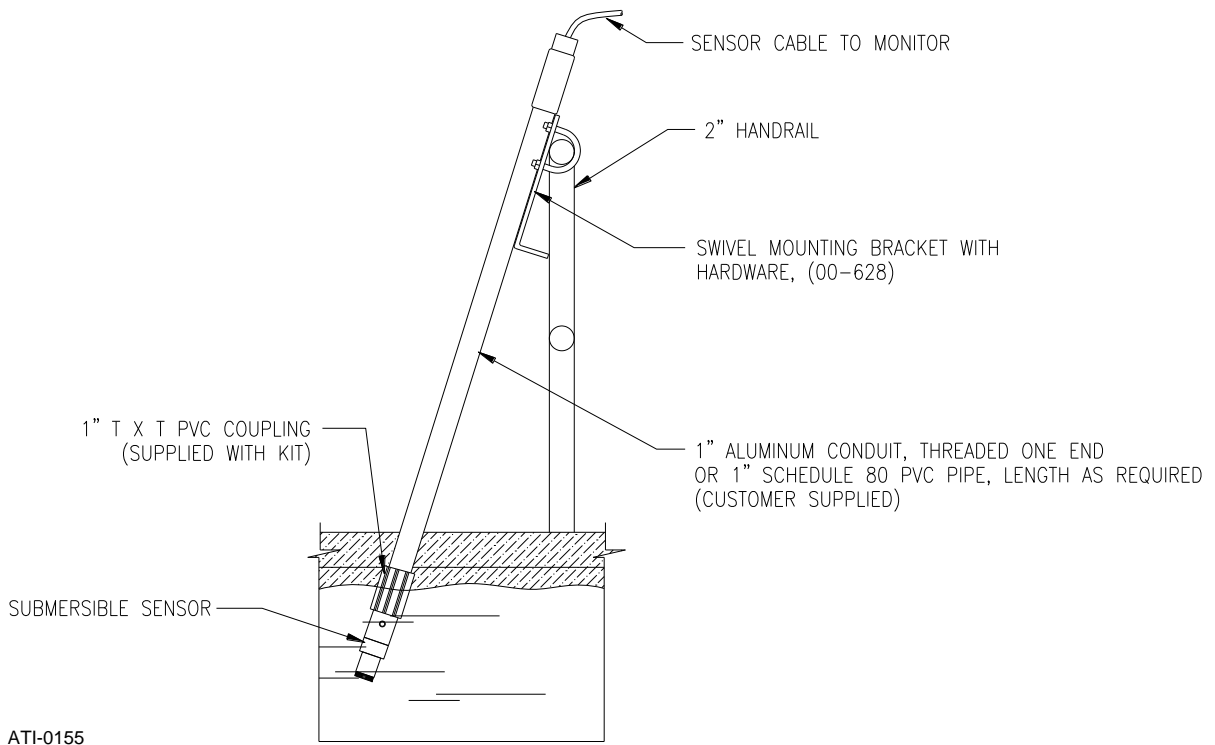


ATI-0197

**SUBMERSIBLE SENSOR DIMENSIONS**

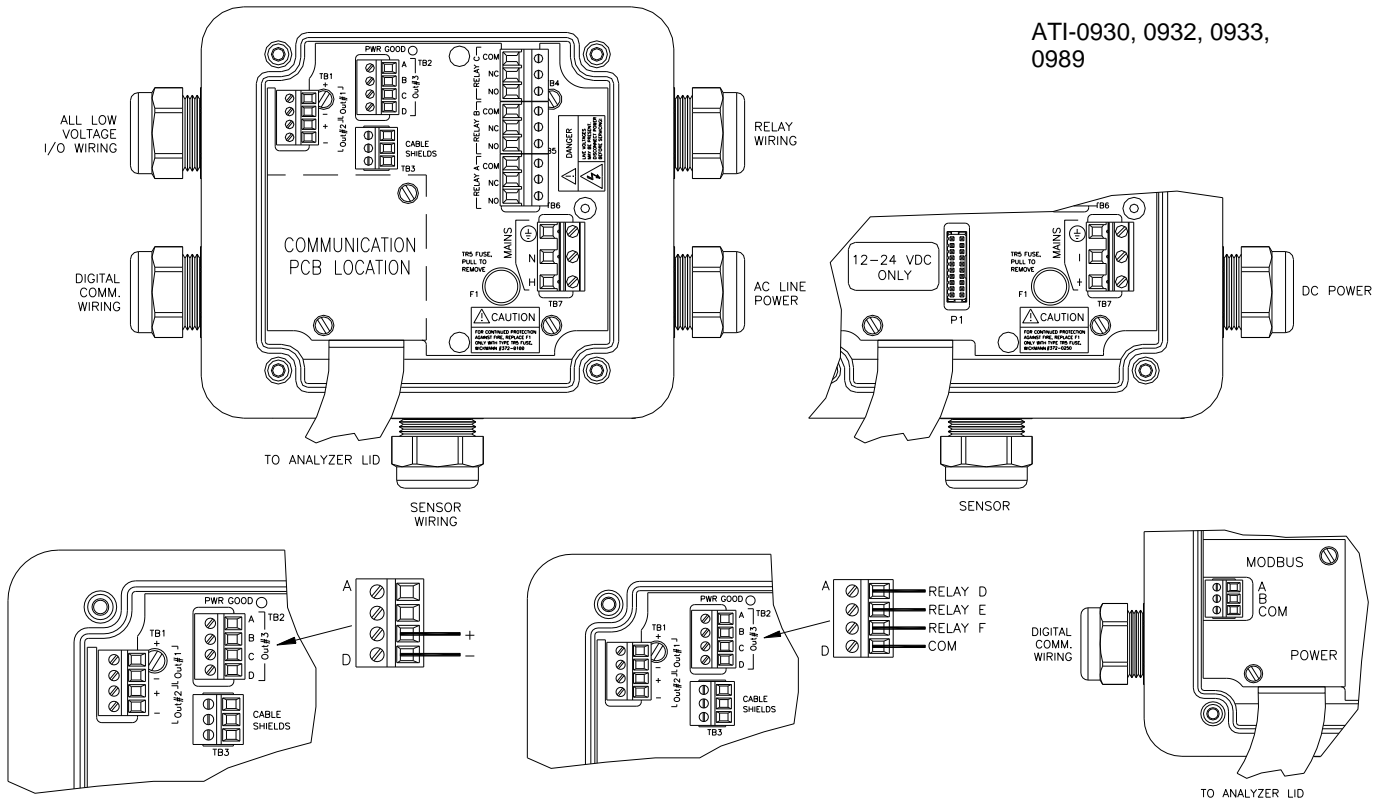


**SUBMERSIBLE SENSOR INSTALLATION**

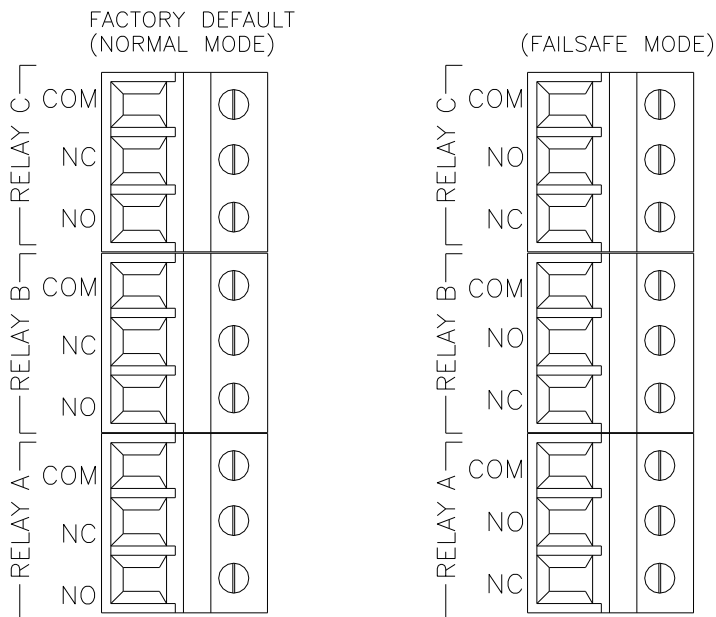




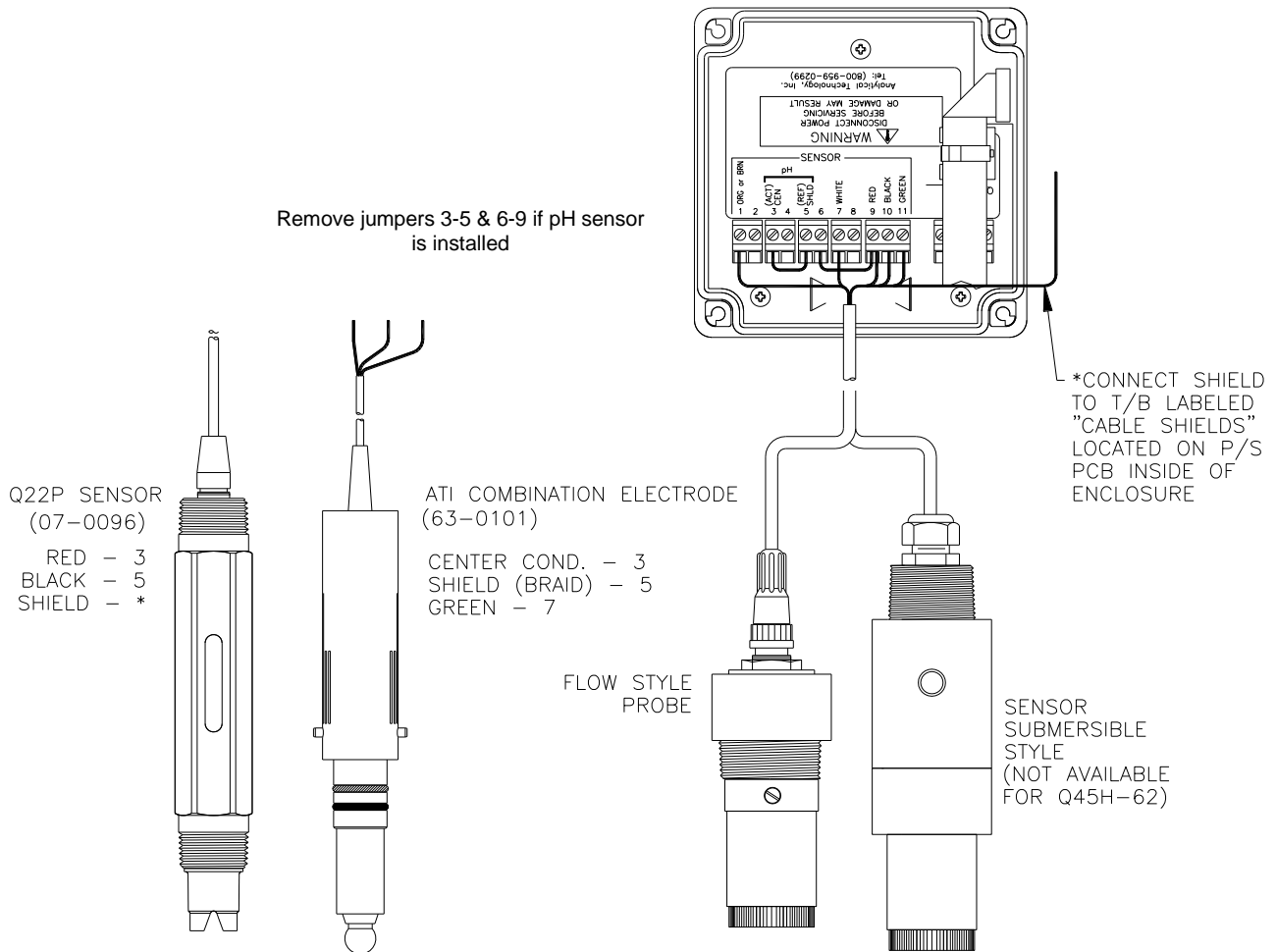
**POWER, RELAY, AND OUTPUT CONNECTIONS**



**RELAY WIRING TB4,5,6 DETAIL**

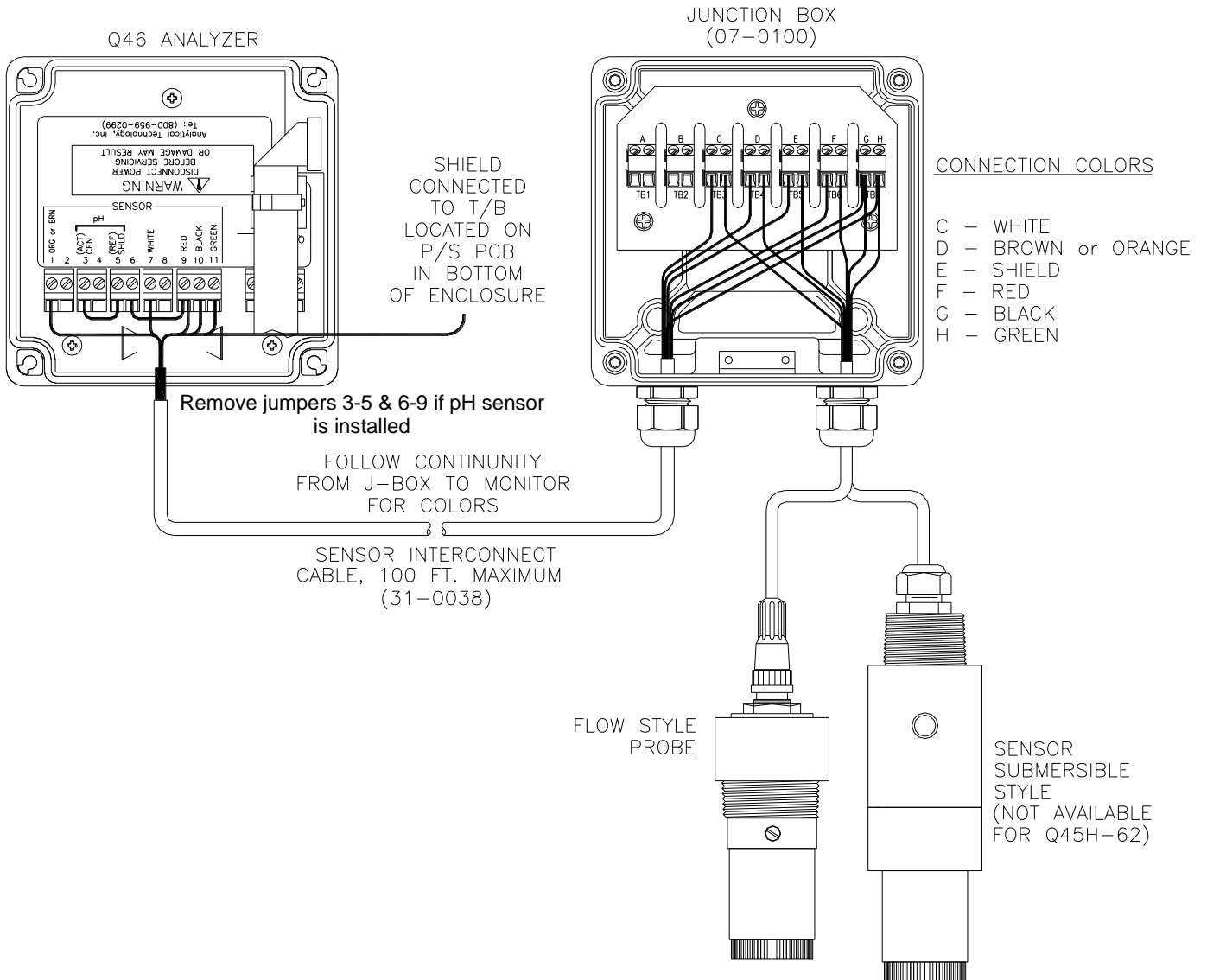


**ELECTRICAL CONNECTIONS**



ATI-0929

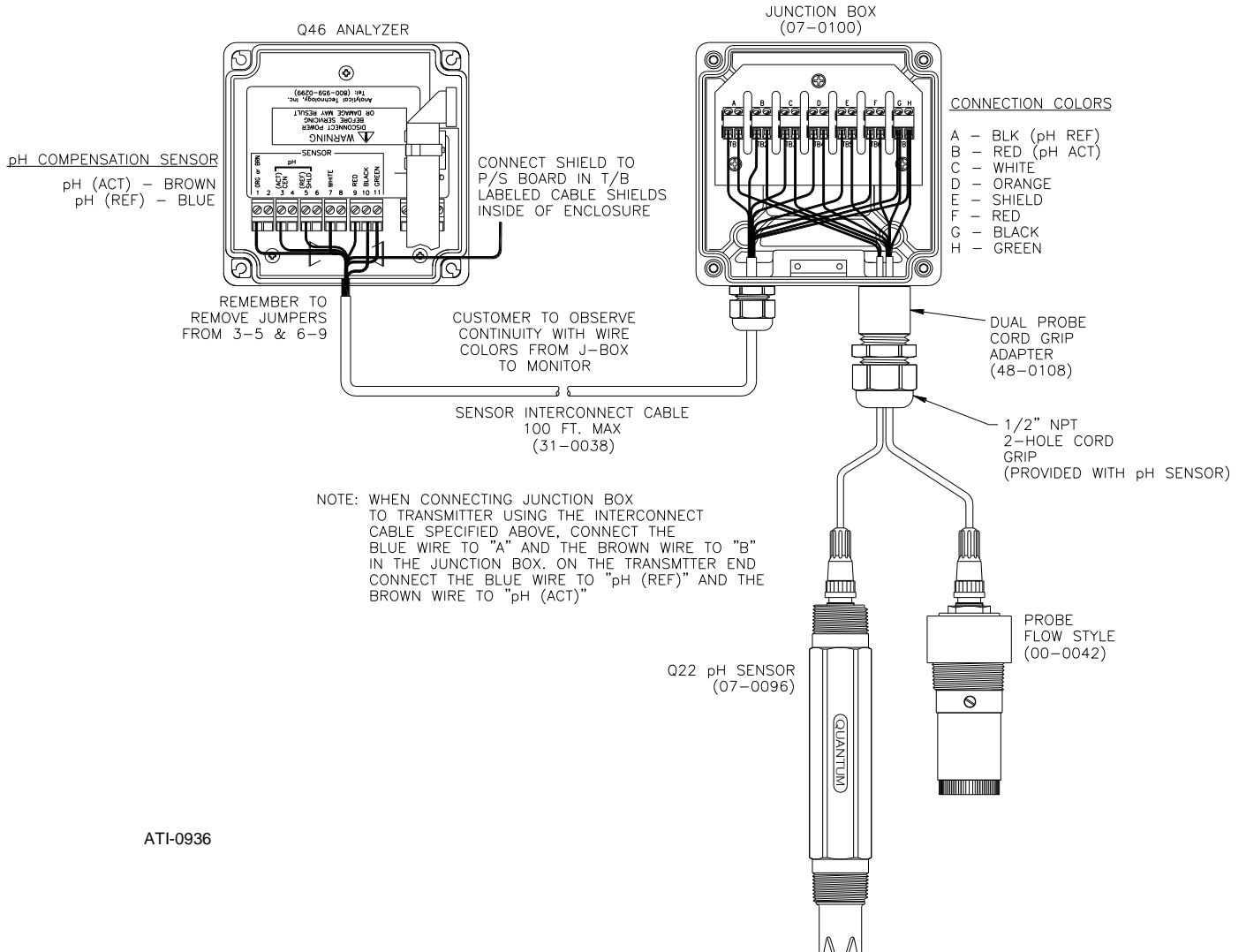
**SENSOR CONNECTIONS – REMOTE JUNCTION BOX**



ATI-0934

**SENSOR CONNECTIONS Cl<sub>2</sub> pH w/Junction Box**

**(63-0101) Bayonet Style pH Probe CANNOT be used in a remote application**



ATI-0936