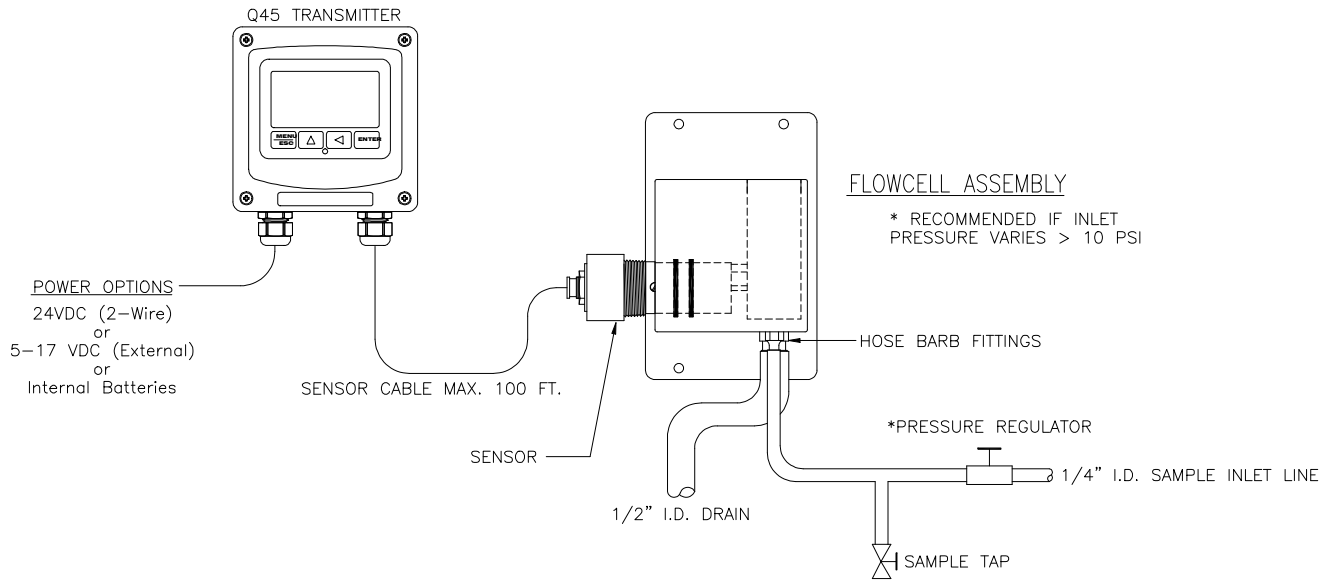
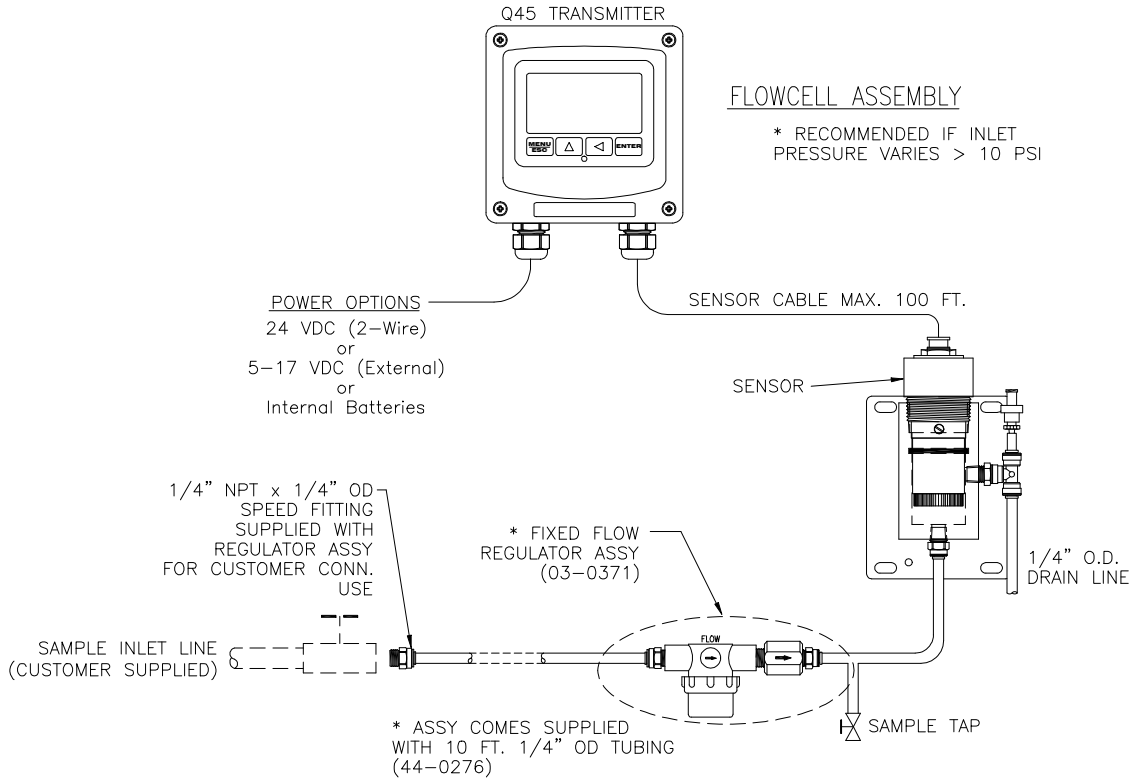


SYSTEM WITH CONSTANT HEAD FLOWCELL



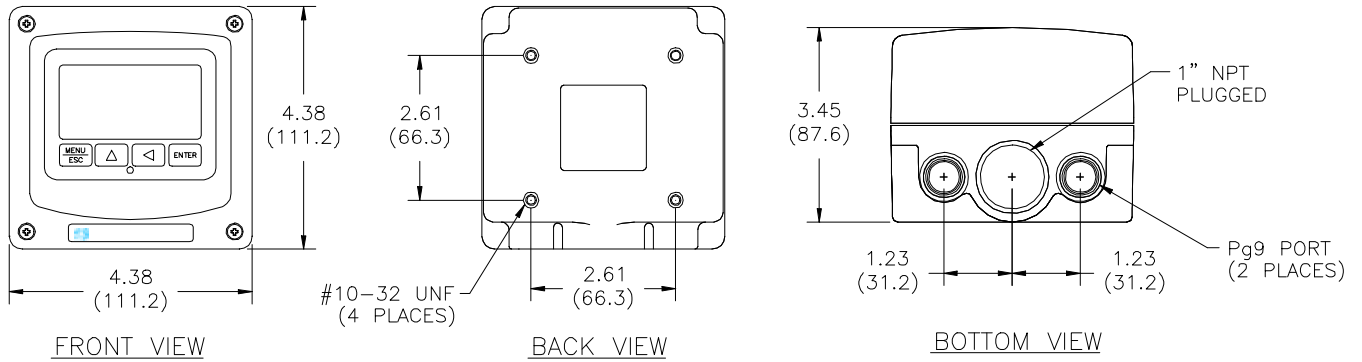
ATI-0730

SYSTEM WITH SEALED FLOWCELL



ATI-0891

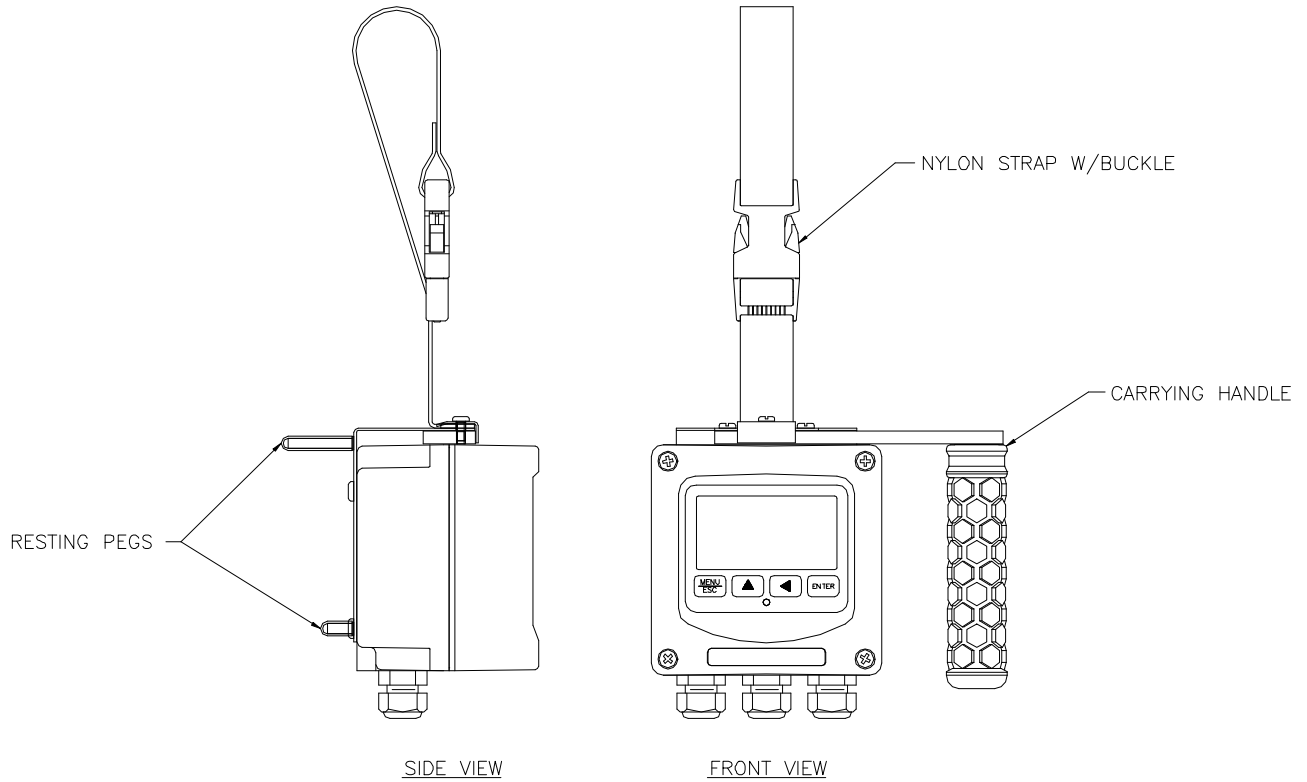
2-WIRE or REMOTE DC MODELS



NOTE: JUNCTION BOXES HAVE SAME DIMENSIONS AS 2-WIRE TRANSMITTER

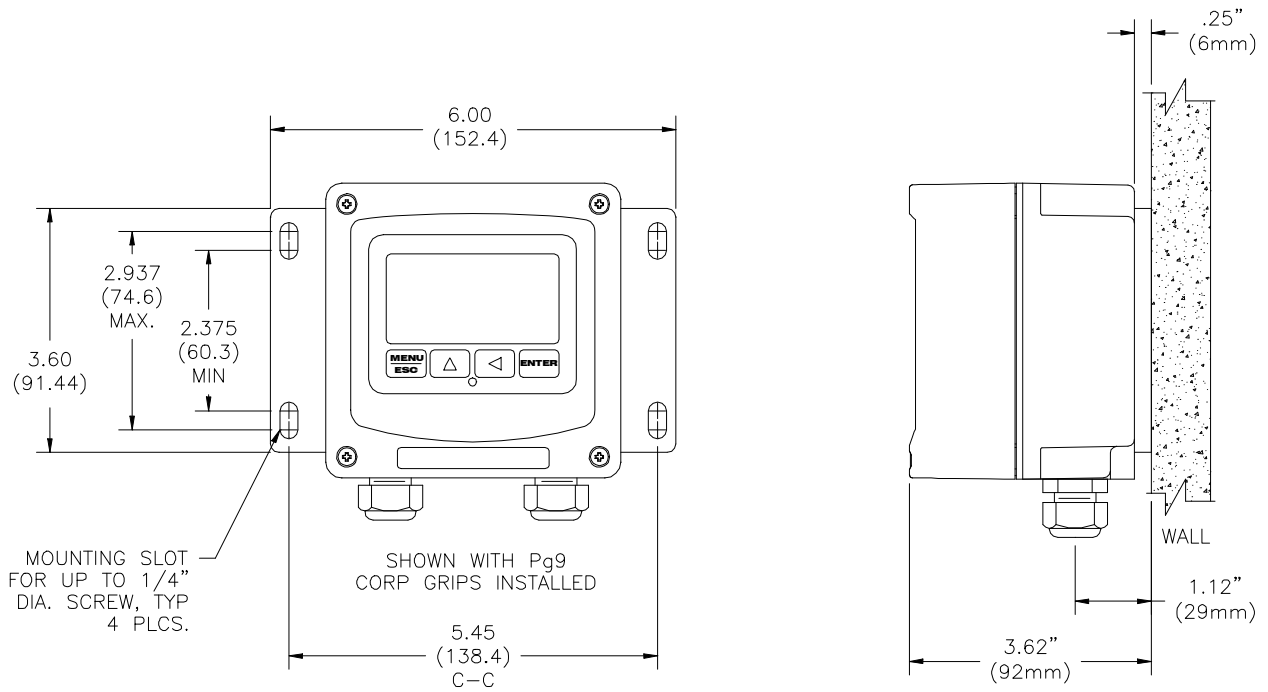
ATI-0655

INTERNAL BATTERY MODEL



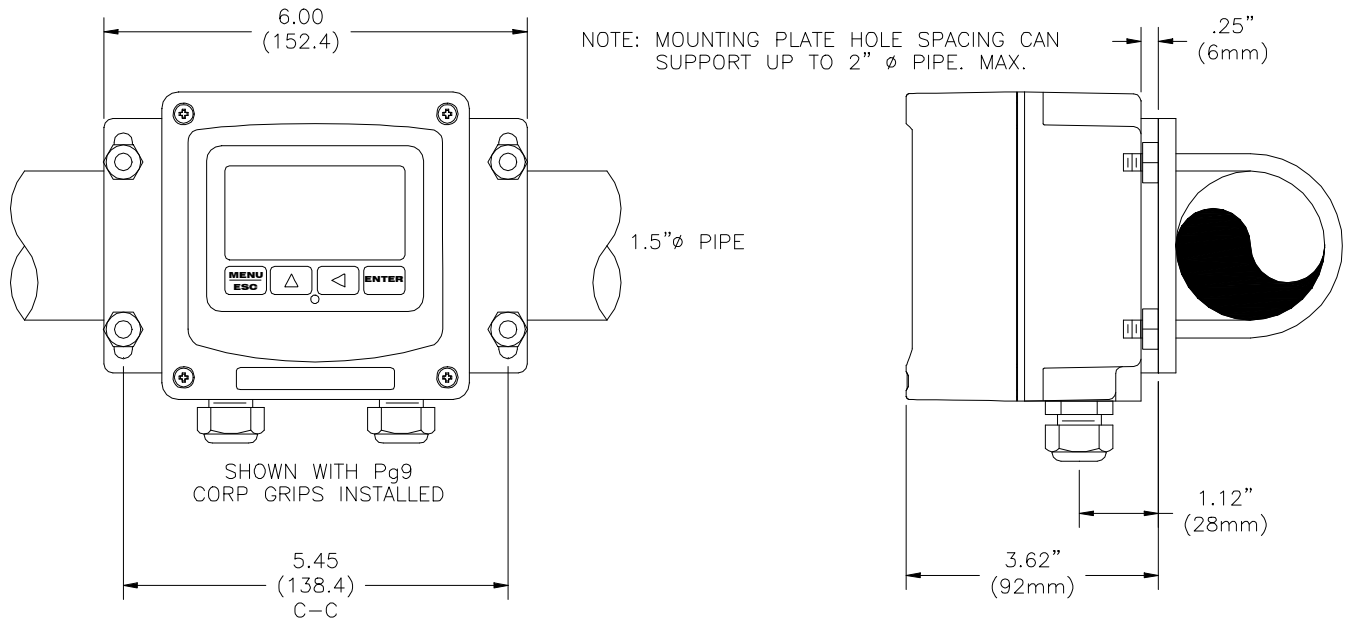
ATI-0688

WALL MOUNTING



ATI-1033

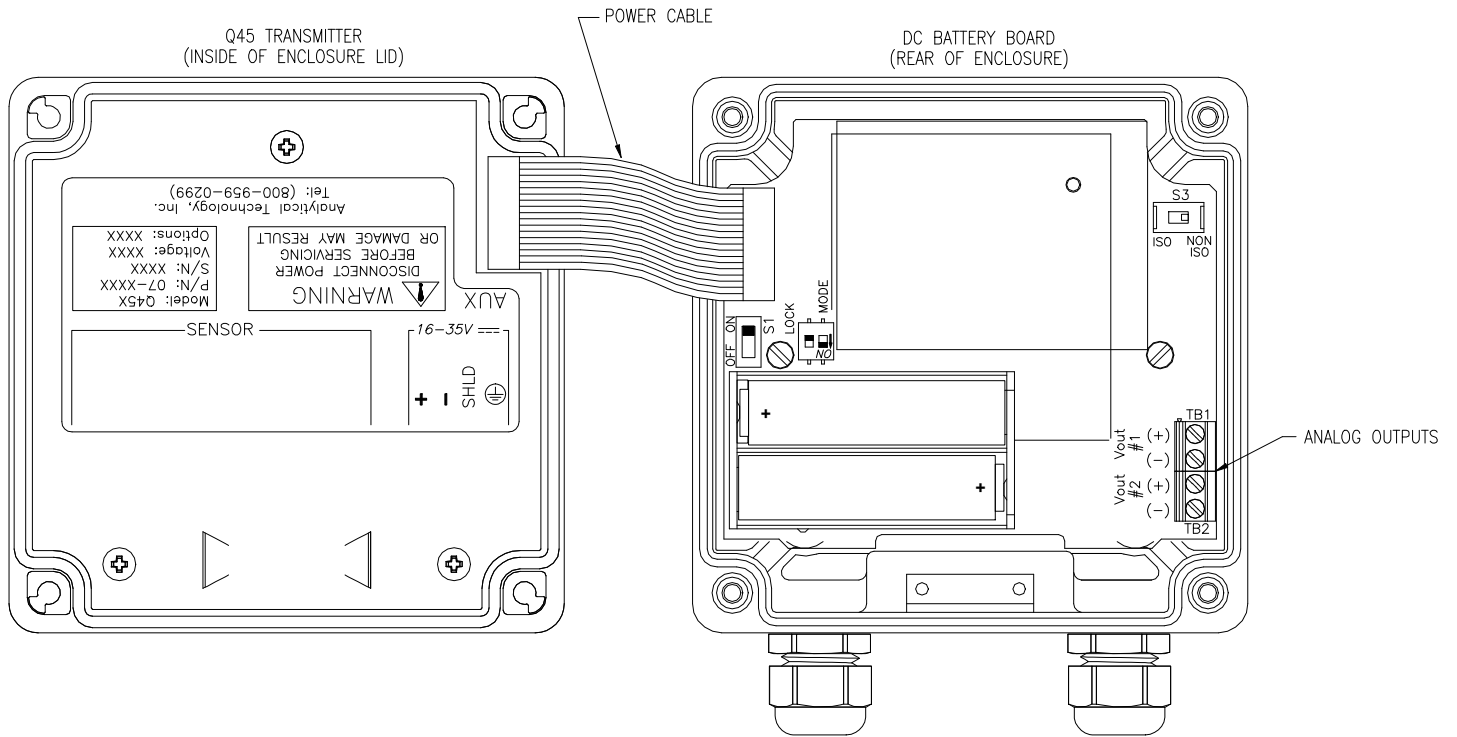
PIPE MOUNTING



NOTE: PLATE MAY BE TURNED 90° FOR VERTICAL PIPE MOUNTING

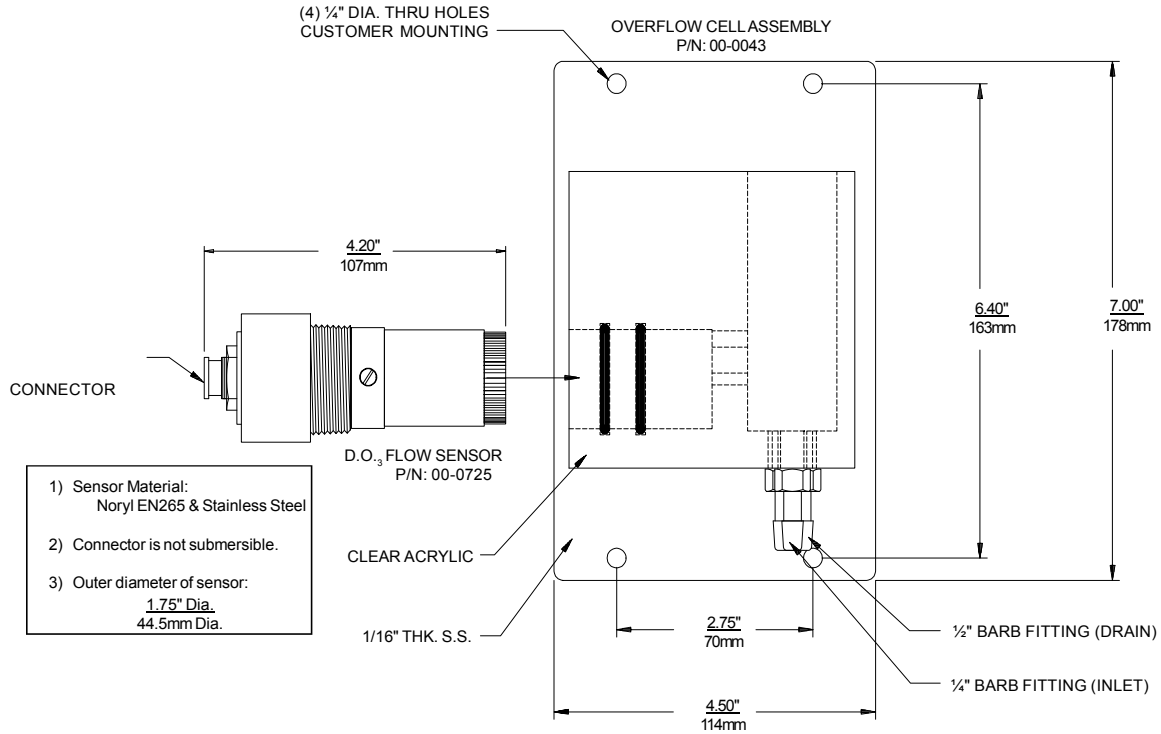
ATI-1034

INTERNAL BATTERY CONFIGURATION



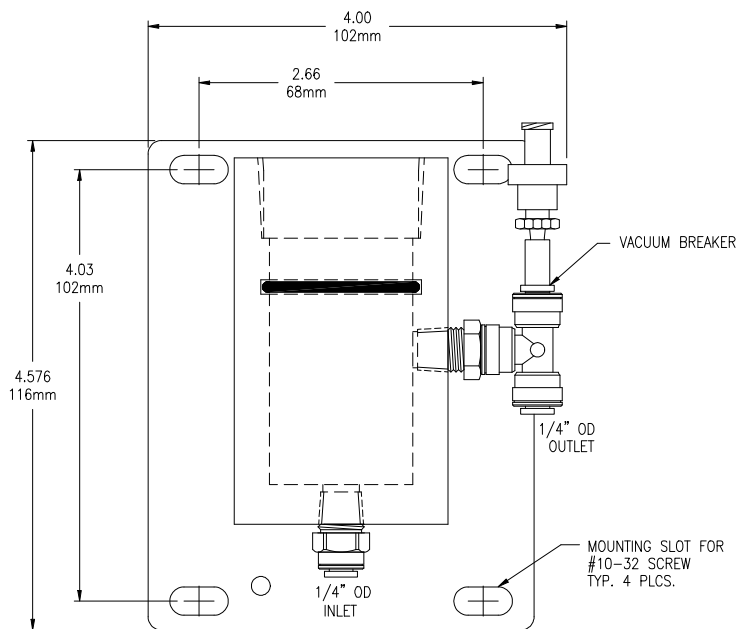
ATI-0827b

FLOW SENSOR DIMENSIONS & OVERFLOW CELL INSTALLATION



ATI-0196

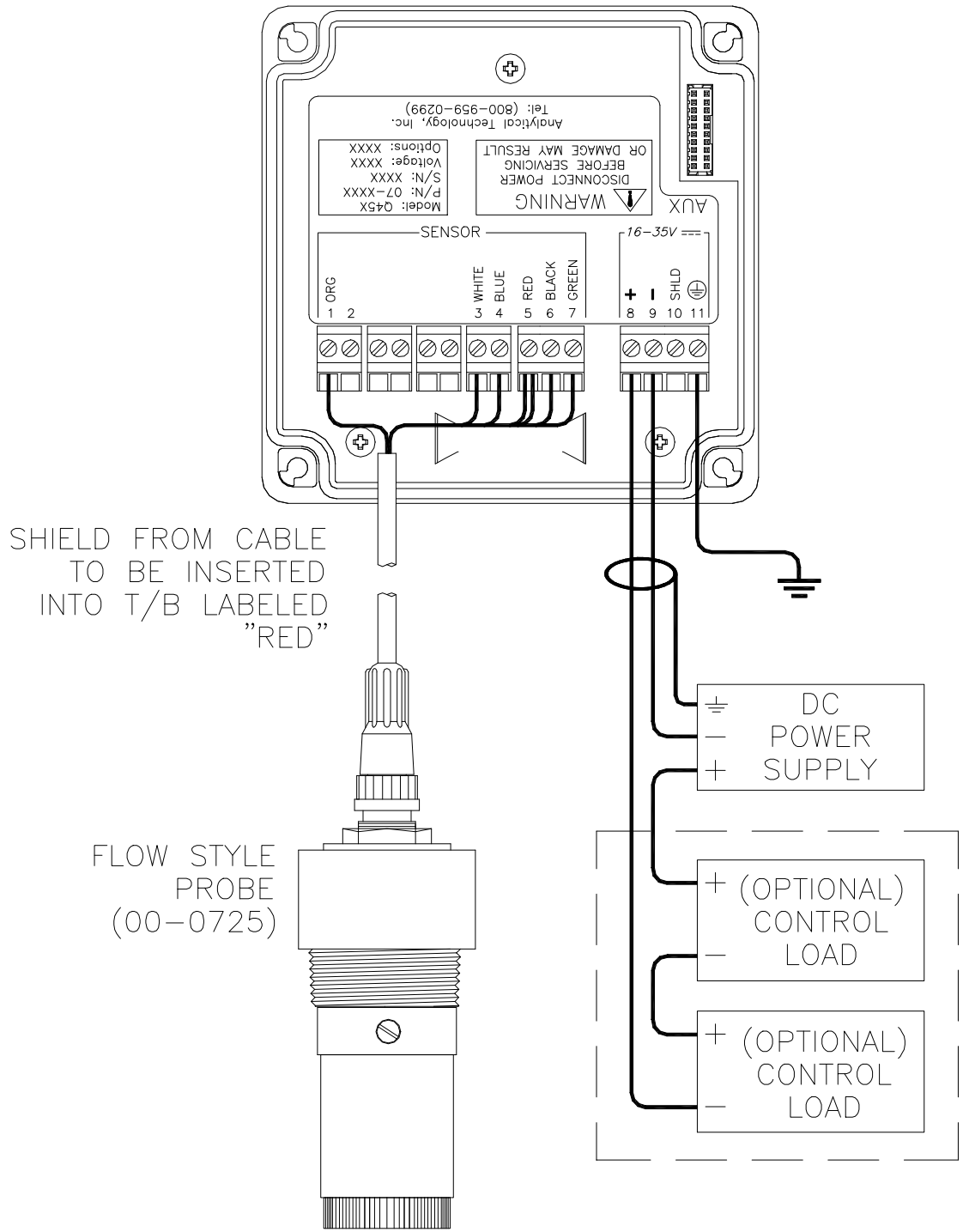
SEALED FLOWCELL ASSEMBLY (00-1522) DIMENSIONS



Material: Acrylic
Mounting Plate: PVC

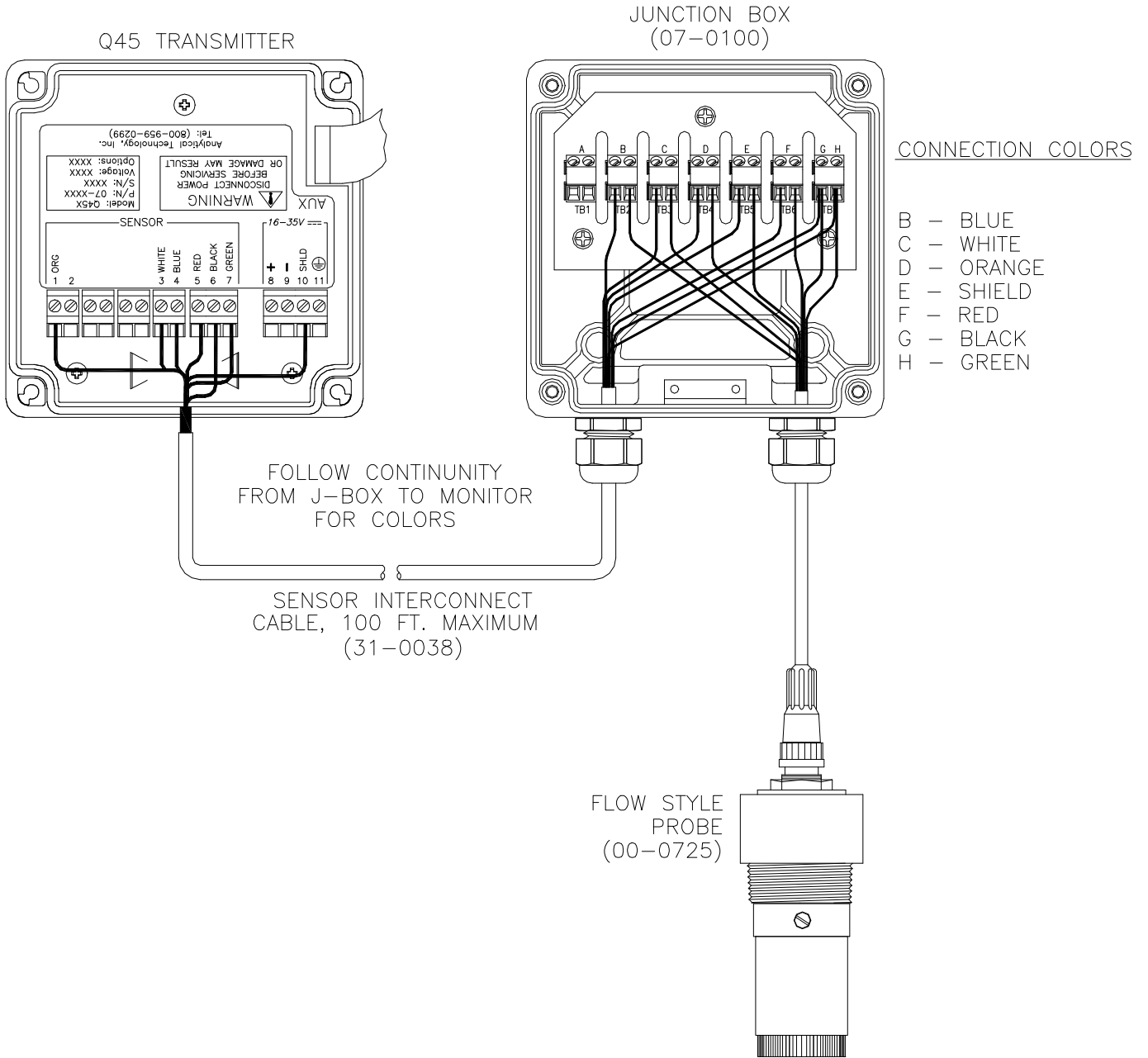
ATI-0859

ELECTRICAL CONNECTIONS - 2-WIRE TRANSMITTER



- NOTES:**
1. Voltage between Terminals 8 & 9 MUST be between 16 & 35 VDC.
 2. Earth ground into Terminal 11 is HIGHLY recommended. This connection can greatly improve stability in electrically noisy environments.

SENSOR CONNECTIONS - REMOTE JUNCTION BOX



ATI-0893