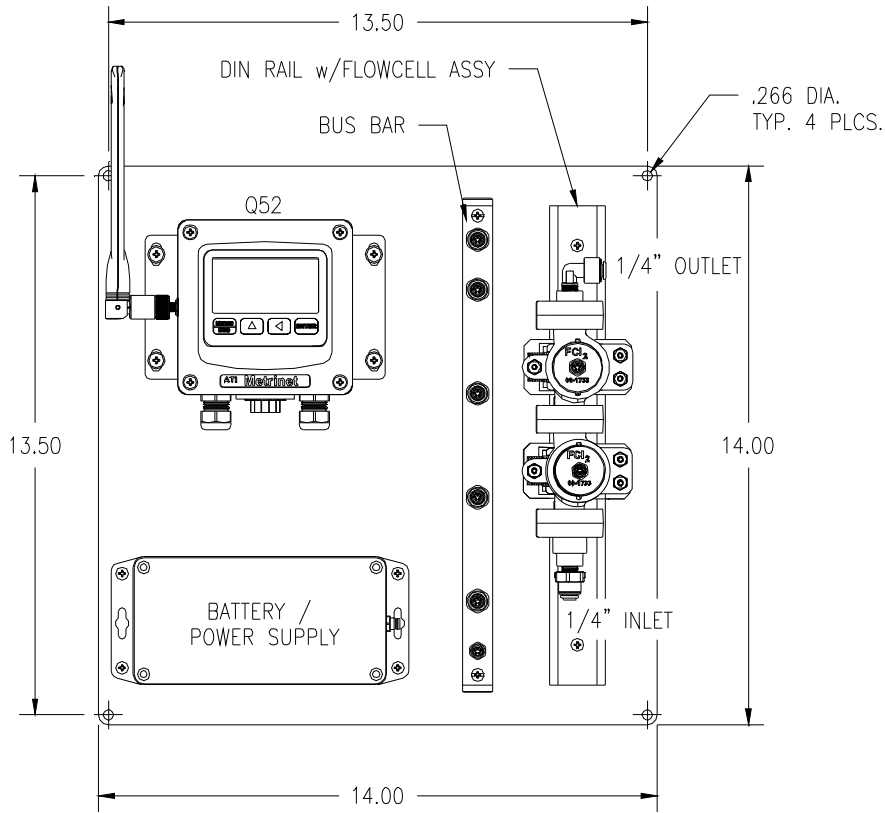
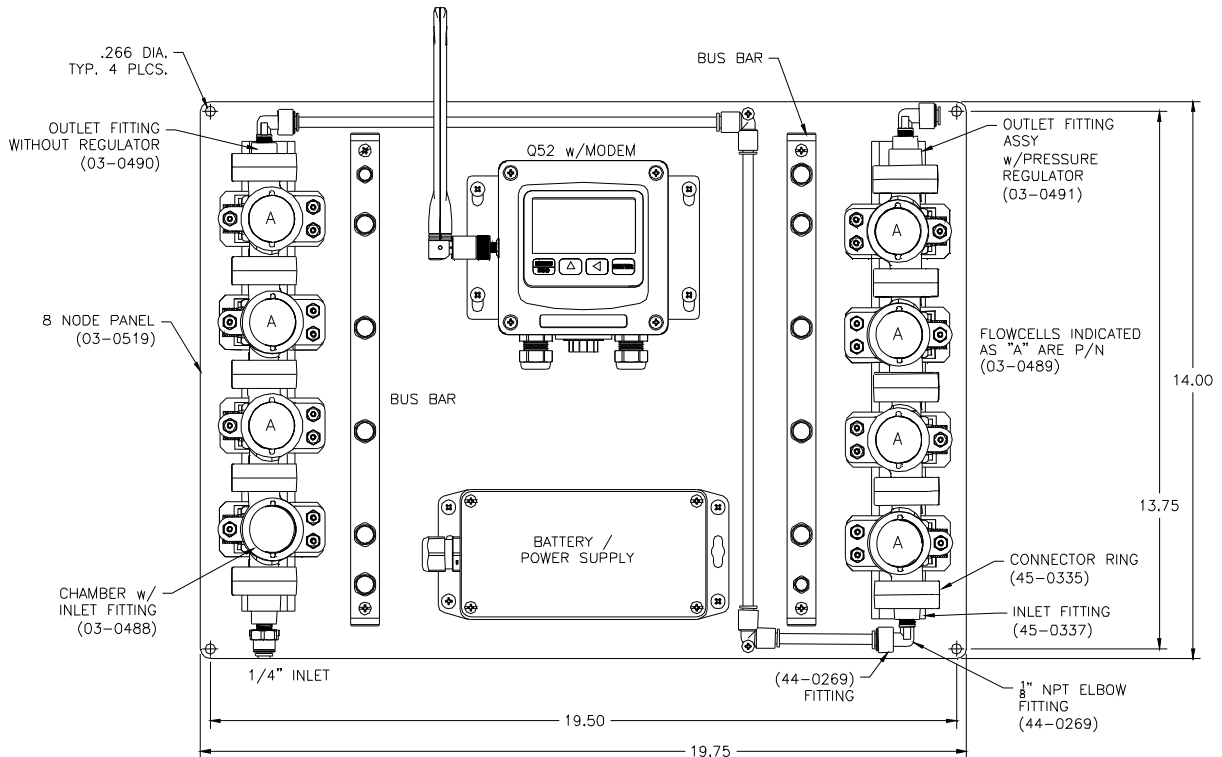


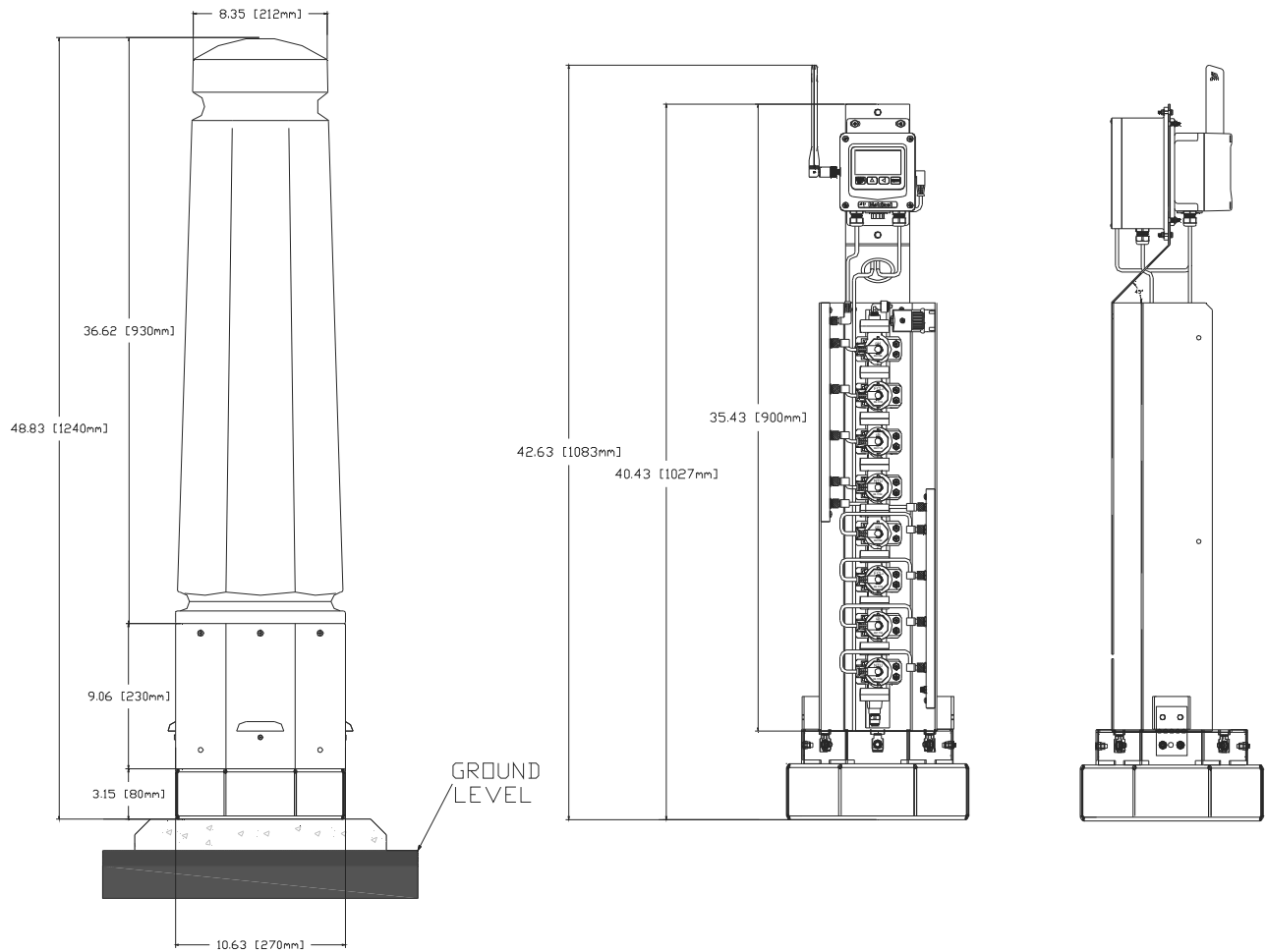
14" x 14" 1-4 Node System w/Mounting Plate



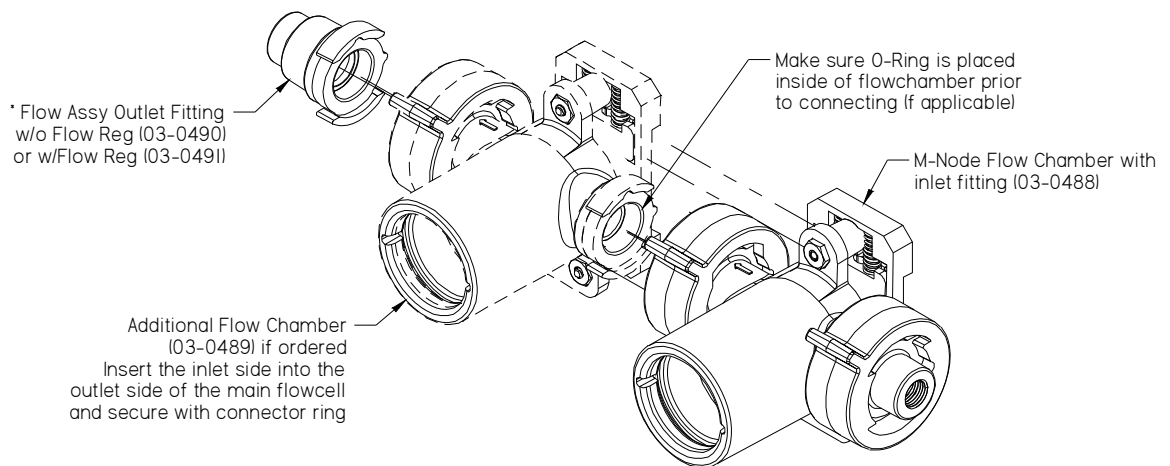
14" x 20" 5-8 Node System w/Mounting Plate



BOLLARD ENCLOSURE DETAILS

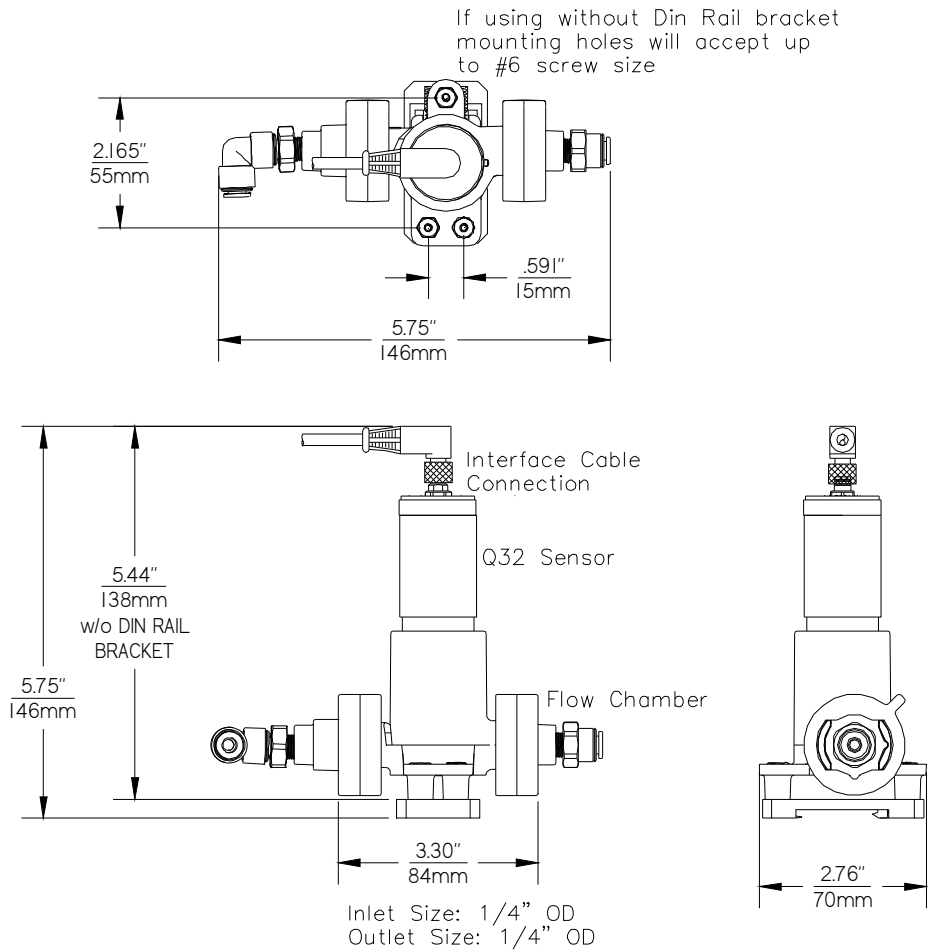


FLOWCELL CONFIGURATION DIAGRAM



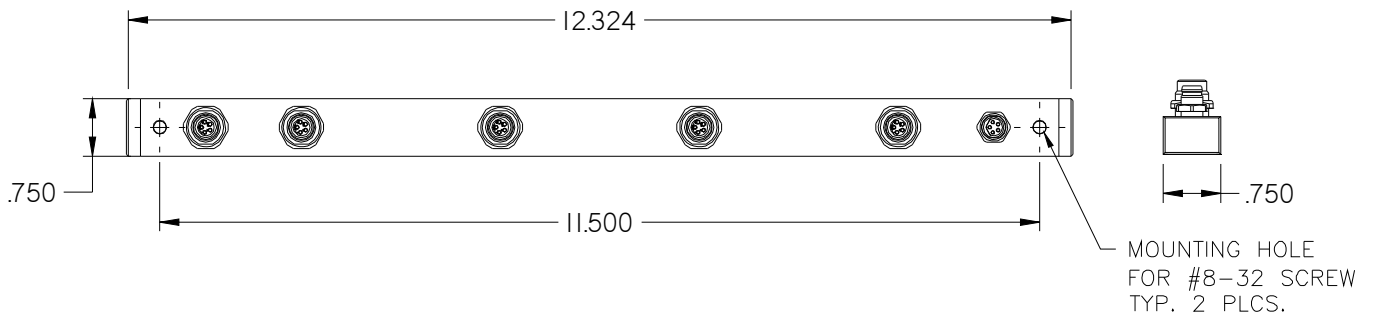
* Insert Outlet Fitting into the end of either an additional flowcell or the M-Node flowcell and secure with connector ring

FLOWCELL DIMENSIONAL DRAWING



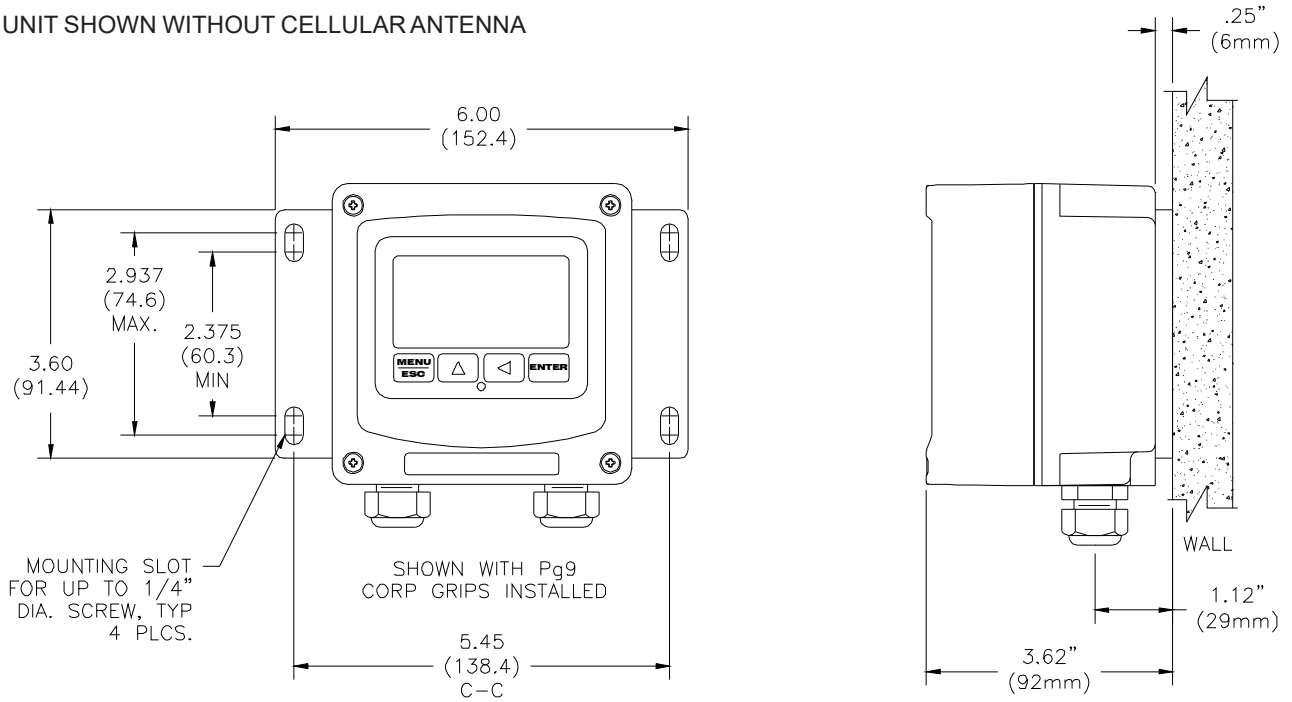
ATI-1145

BUS BAR DIMENSIONAL DRAWING



WALL MOUNTING

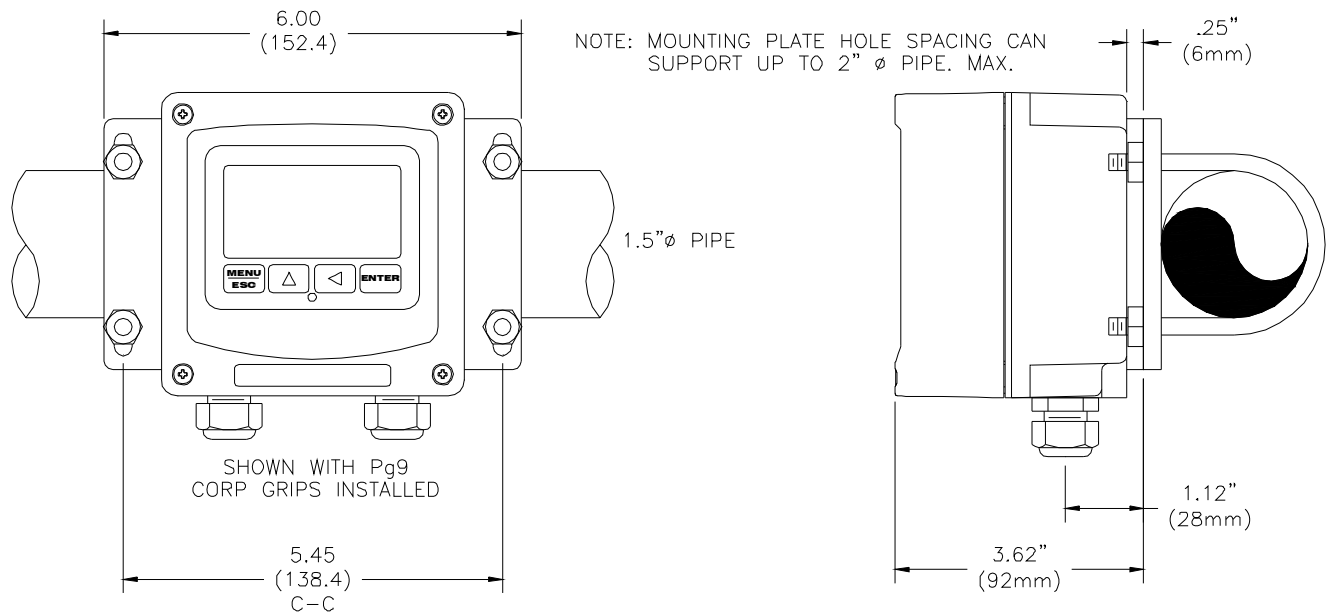
UNIT SHOWN WITHOUT CELLULAR ANTENNA



ATI-1033

PIPE MOUNTING

UNIT SHOWN WITHOUT CELLULAR ANTENNA



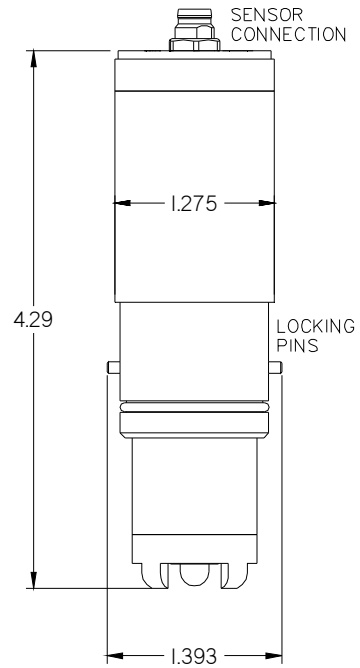
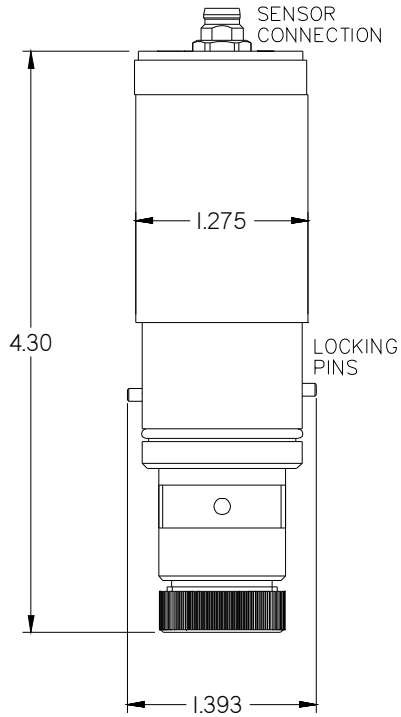
NOTE: PLATE MAY BE TURNED 90° FOR VERTICAL PIPE MOUNTING

ATI-1034

SENSOR DIMENSIONAL INFORMATION

**FCI2, Comb. CI2, DO3, TCI2
CIO2, PAA, D.O., NO2-, H2O2**

pH, ORP



2 Elect. Conductivity

Turbidity

